



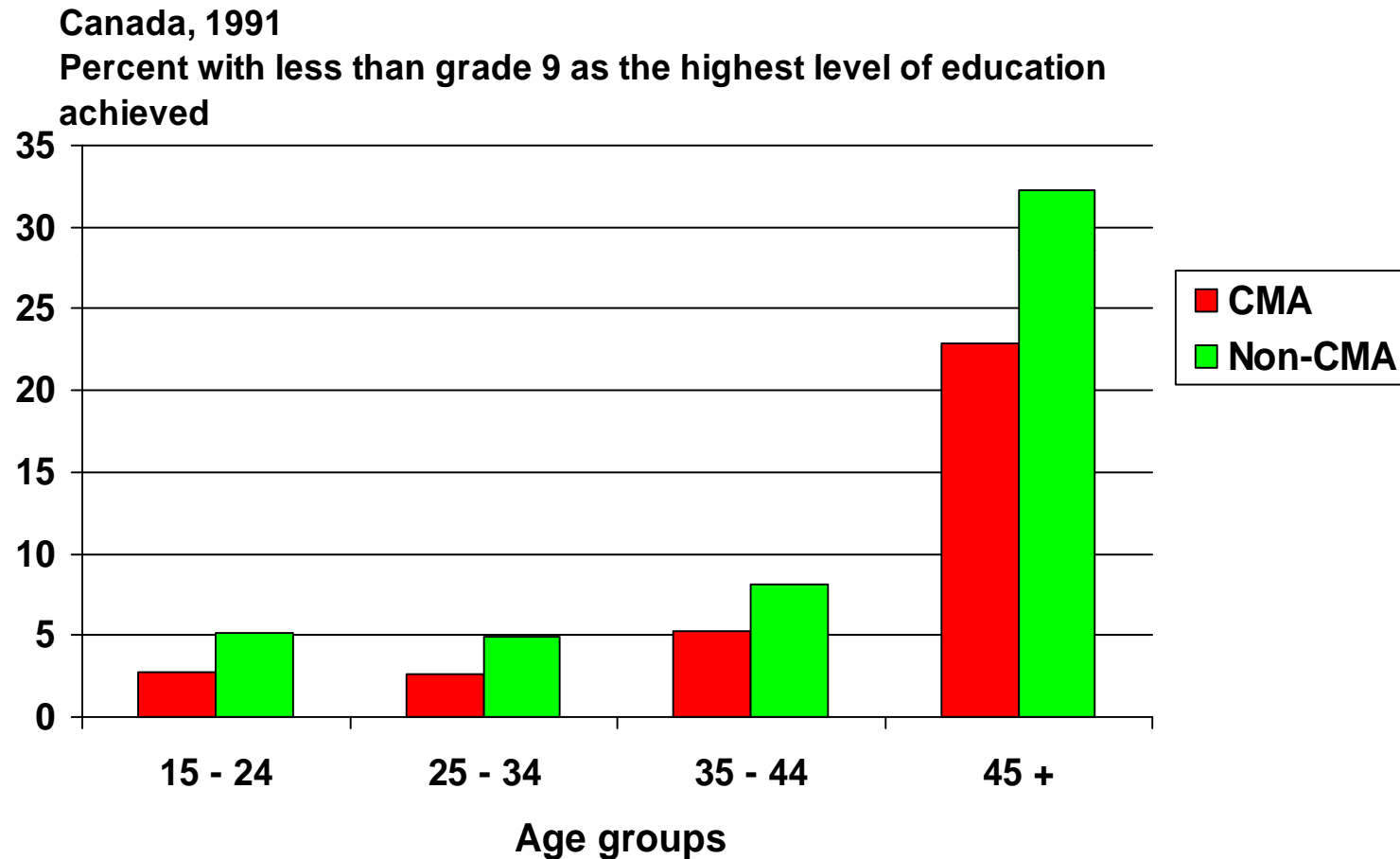
Newfoundland & Labrador, Canada

Adult / Post-Secondary Panel  
Rural Literacy Challenges  
Rob Greenwood, Ph.D.

Literacy: More Than Words  
Saint John, N.B.

April 14, 2008

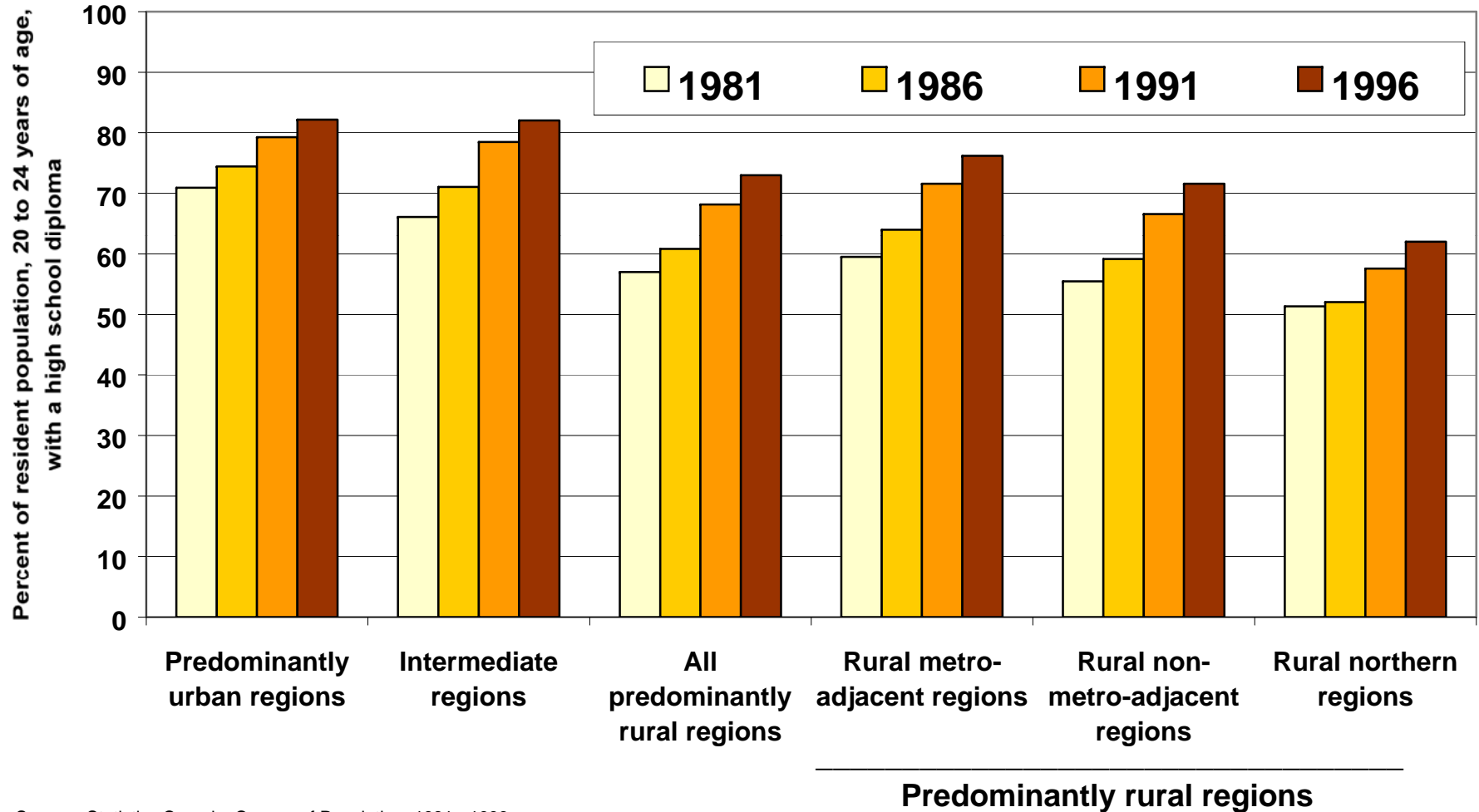
# Higher incidence of low education level in rural areas



Source: Statistics Canada, Census of Population 1991.



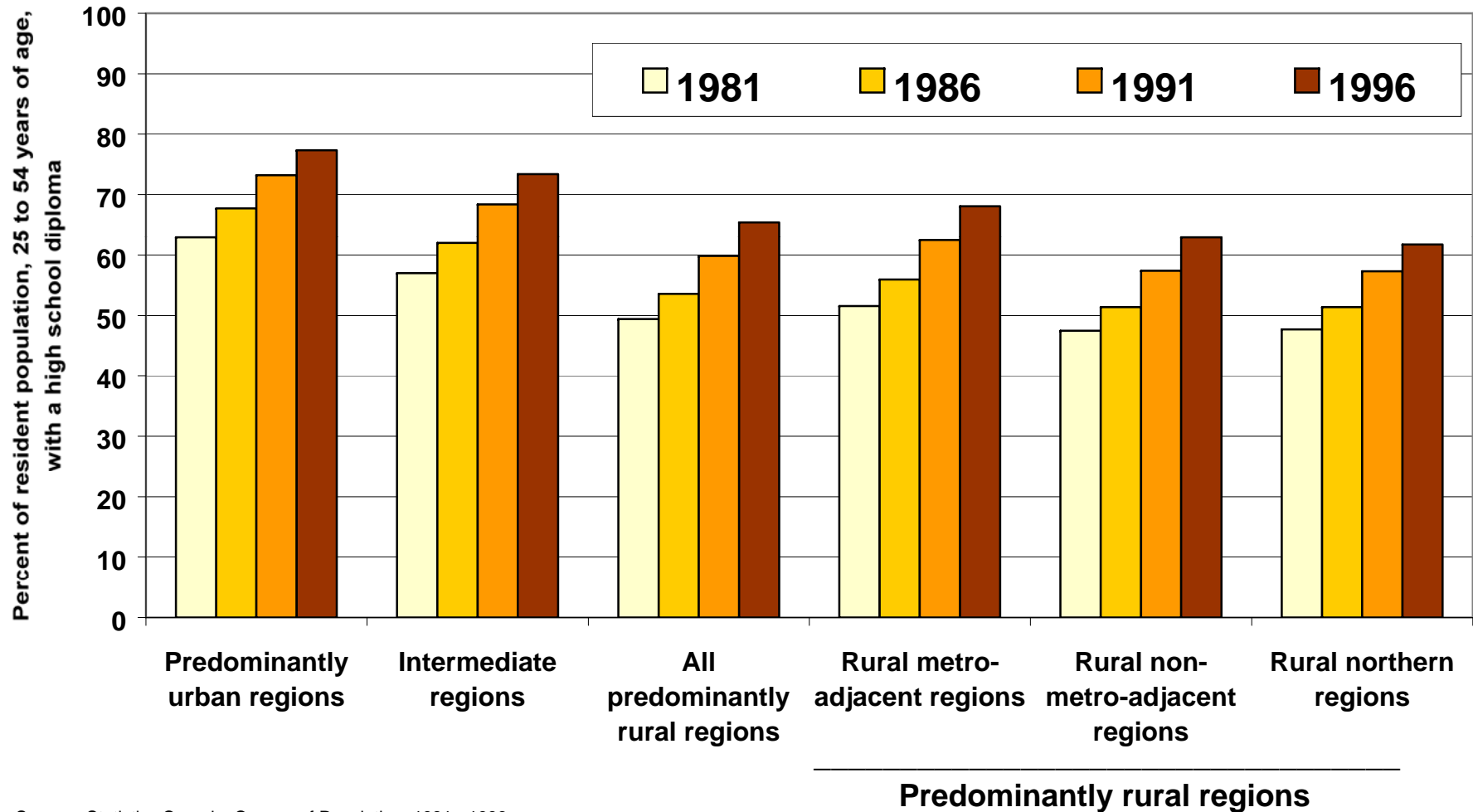
## Rural regions have lower rates of high school graduation (for ages 20-24)



Source: Statistics Canada, Census of Population, 1981 - 1996.



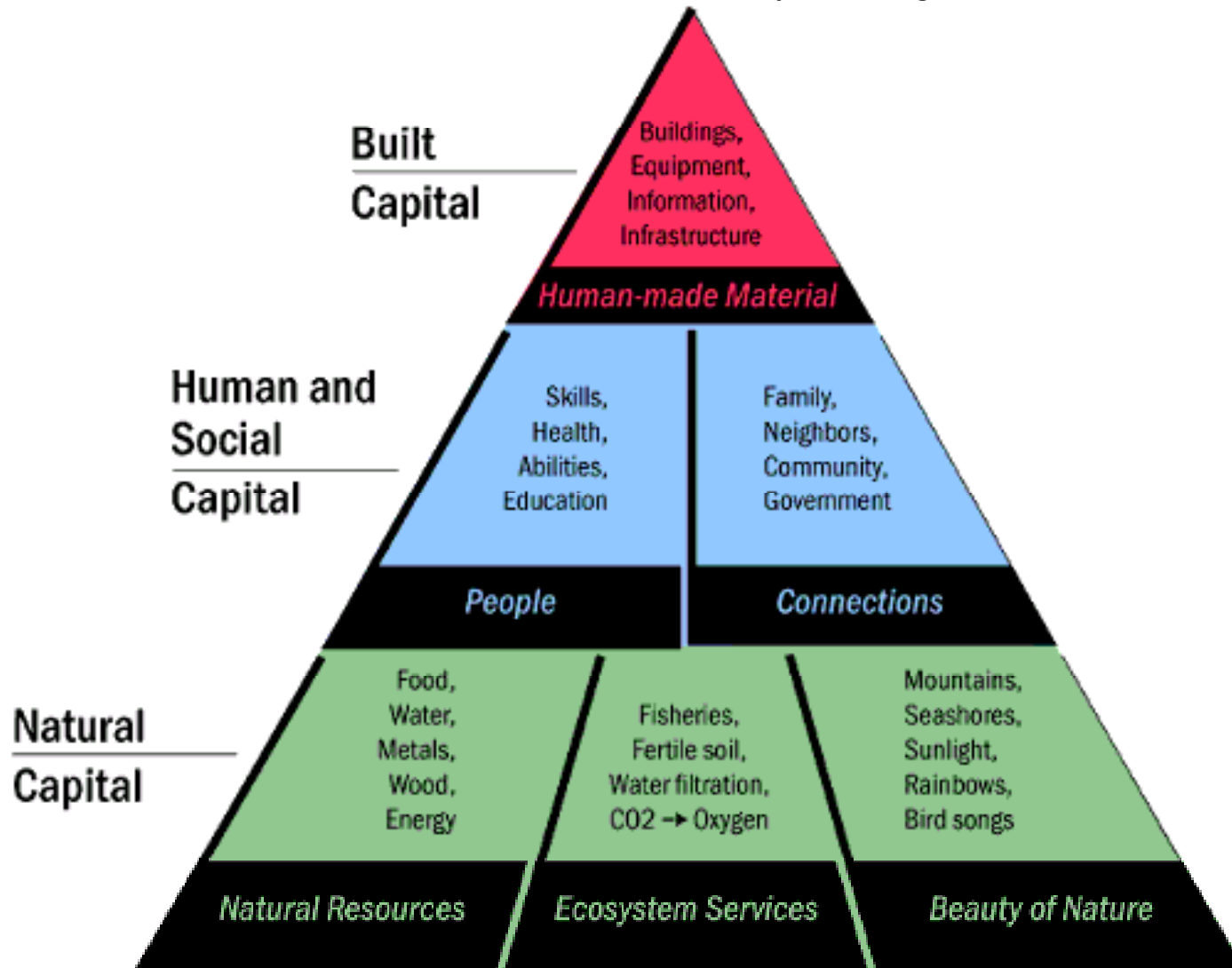
## Rural regions have lower rates of high school graduation (for ages 25-54)



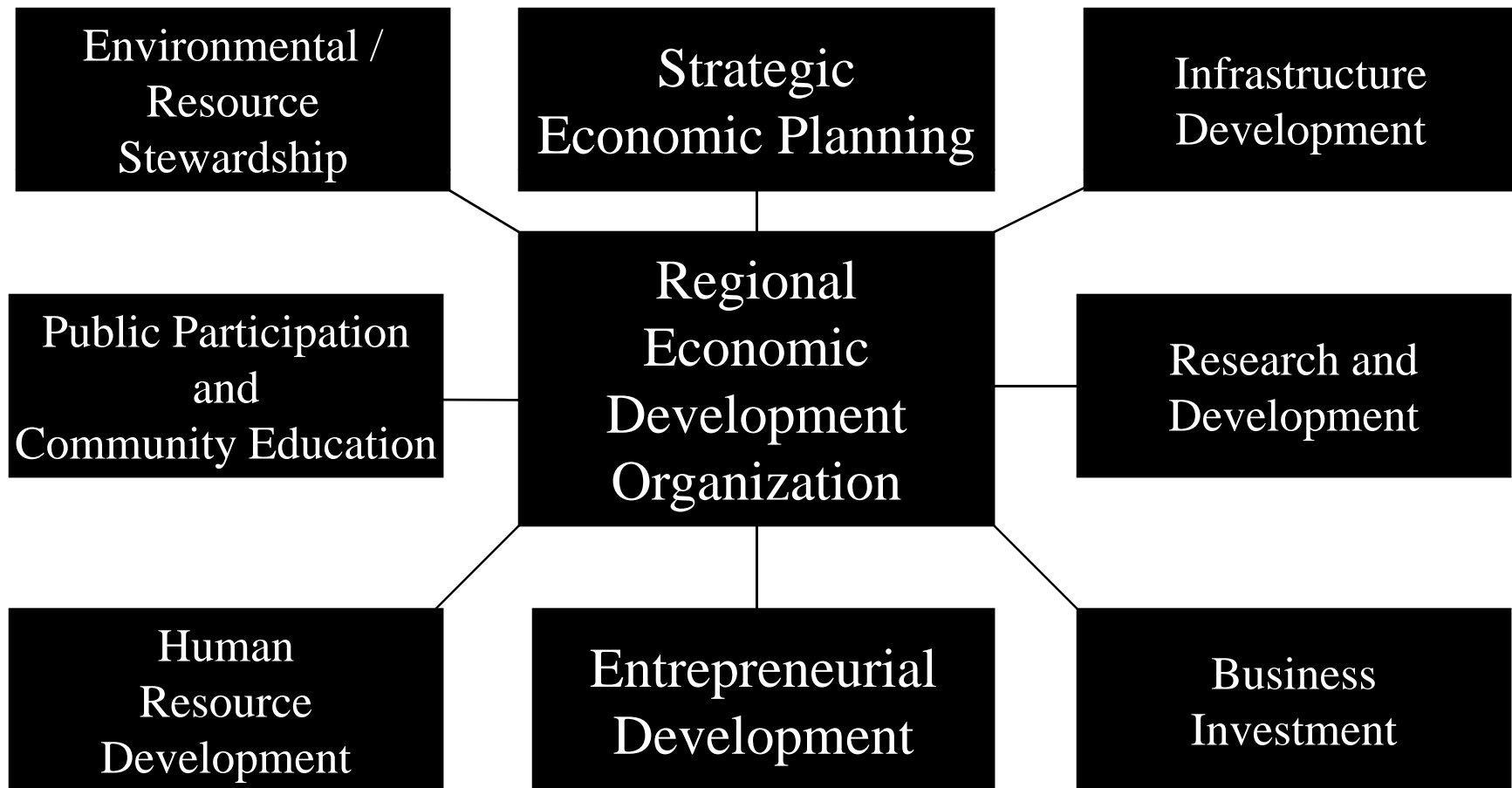
Source: Statistics Canada, Census of Population, 1981 - 1996.

# Community Capital

Dr. David Gauthier, University of Regina



# Structures for Sustainable Rural Development: *Integrated Approach*



# Coordinating across the Silos... and the Coordinators!



# Mark your calendars

## Knowledge in **MOTION/08**

October 16-18, 2008 / St. John's, Newfoundland, Canada

**Exploring the Role of Higher Education  
Institutions in Regional Development. & Knowledge Mobilization - Learning  
What Works Best, From Each Other.**

The Leslie Harris Centre of Regional Policy and Development, Memorial University of Newfoundland is hosting an International Conference of interest to all those committed to:

- Fostering regional development by applying knowledge and innovation generated by higher education institutions.
- Sharing techniques, processes and best practices for linking research, teaching and outreach with communities, businesses, governments and non-governmental organizations.

If you are interested in partnering, contributing papers, or attending, contact David Yetman, Manager of Knowledge Mobilization, at [dyetman@mun.ca](mailto:dyetman@mun.ca).

